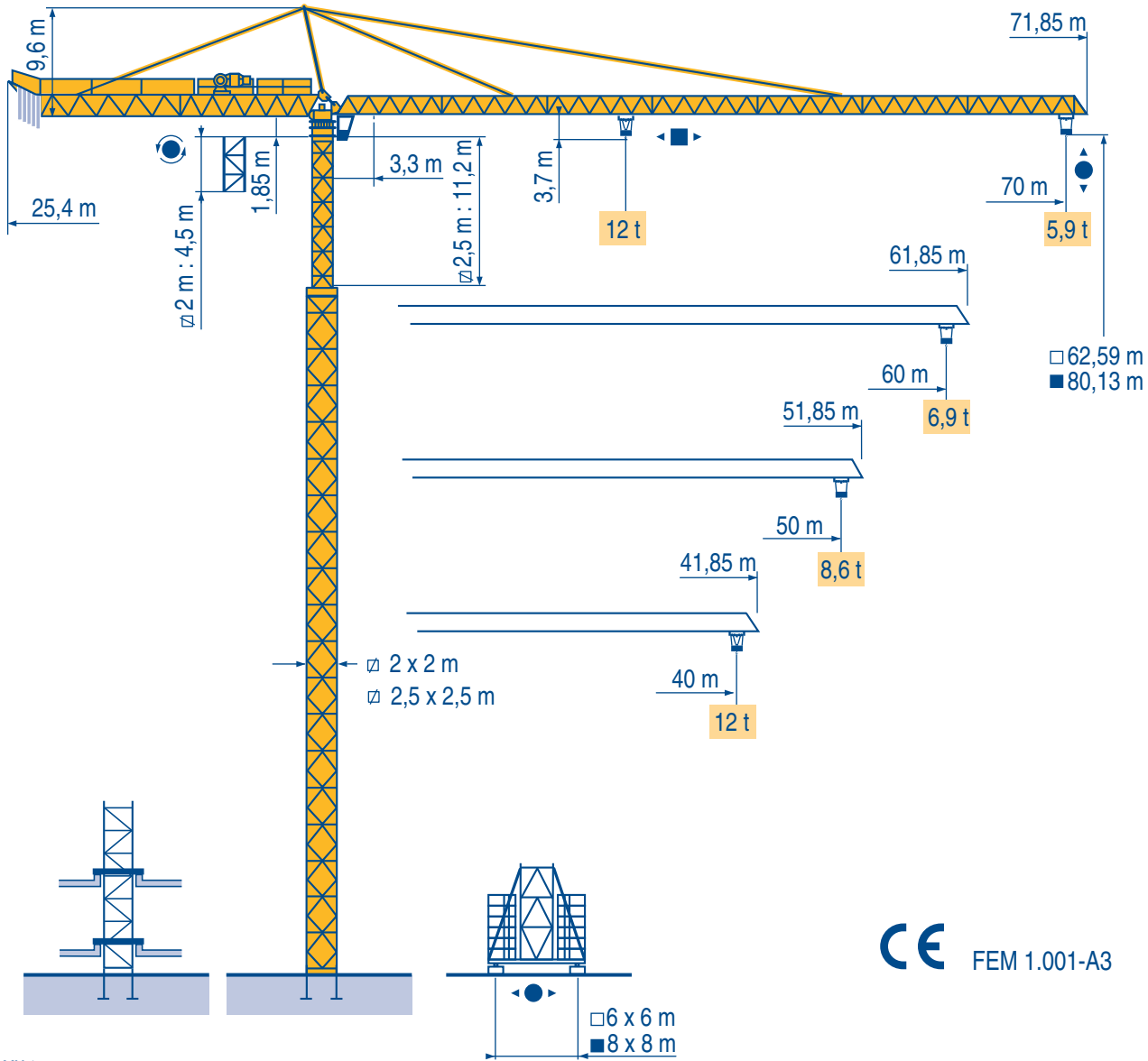


# TOPKIT K3/59 C



LMX 1

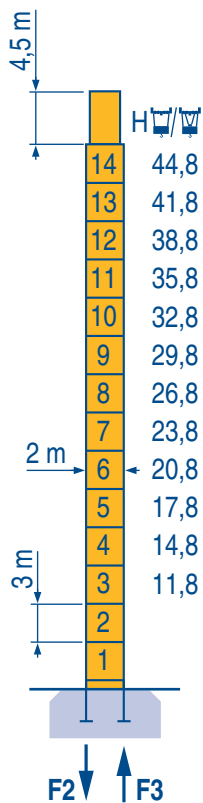
CE FEM 1.001-A3

- Igo HD HDM
- HDT
- GTMR
- CITY CRANE
- TOPKIT MD MAXI MD
- MAXI TOPKIT
- Topless MDT
- MR



2 m x 2 m

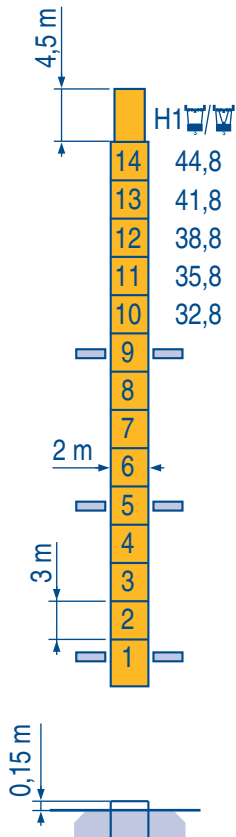
2,5 m x 2,5 m



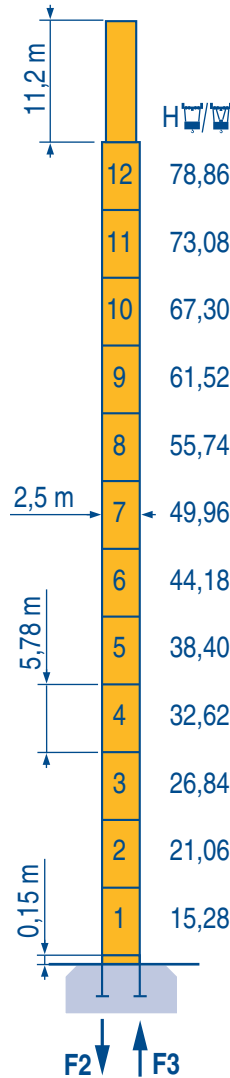
PA 690

F2 ● 175 t ■ 128 t  
F3 ● 117 t ■ 76 t

95 t



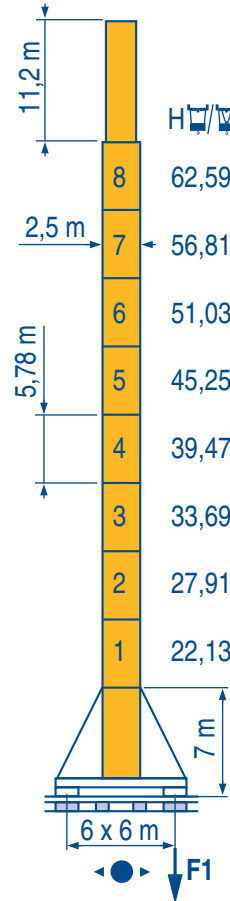
BA 68A



PA 852

F2 ● 195 t ■ 197 t  
F3 ● 126 t ■ 134 t

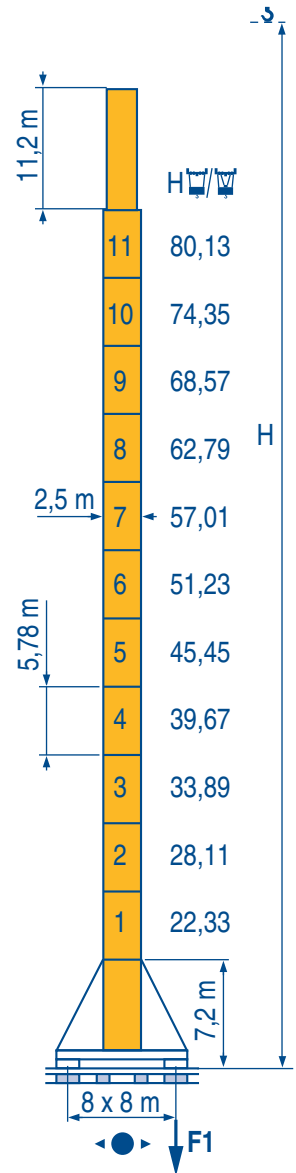
110 t



XA 850

F1 ● 118 t ■ 94 t

115 t



YA 851

F1 ● 107 t ■ 108 t

130 t

LMX 1

**F** Voir télescope sur dalles  
● Réactions en service  
■ Réactions hors service  
▲ A vide sans lest (ni train de transport) avec flèche et hauteur maximum.

**D** Siehe Kletterkrane im Gebäude  
Reaktionskräfte in Betrieb  
Reaktionskräfte außer Betrieb  
Ohne Last, Ballast (und Transportachse), mit Maximalausleger und Maximalhöhe.

**GB** See climbing crane  
Reactions in service  
Reactions out of service  
Without load, ballast (or transport axes), with maximum jib and maximum height.

**E** Veja grua trepadora  
Reacciones en servicio  
Reacciones fuera de servicio  
Sin carga, sin lastre, (ni tren de transporte), flecha y altura máxima.

**I** Consultare gru in cavedio  
Reazioni in servizio  
Reazioni fuori servizio  
A vuoto, senza zavorra (ne assali di trasporto) con braccio massimo e altezza massima.

**P** Ver telescopagem sobre lages  
Reacções em serviço  
Reacções fora de serviço  
Sem carga (nem trem de transporte)-sem lastro com lança e altura máximas.

**Courbes de charges**  
**Lastkurven**



**Load diagrams**  
**Curvas de cargas**



**Curve di carico**  
**Curva de cargas**



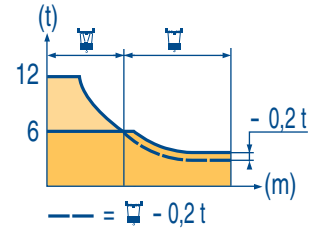
70 m	3,3	▶	37,2	40	43	45	47	50	53	55	57	60	63	65	67	69	70 m
			12	11,1	10,2	9,7	9,2	8,6	8	7,6	7,3	6,9	6,5	6,2	6	6	5,9 t

60 m	3,3	▶	37,2	40	43	45	47	50	53	55	57	60 m
			12	11,1	10,2	9,7	9,2	8,6	8	7,6	7,3	6,9 t

50 m	3,3	▶	37,2	40	43	45	47	50 m
			12	11,1	10,2	9,7	9,2	8,6 t

40 m	3,3	▶	40 m
			12 t

LMX1



**Télescopage sur dalles**  
**Kletterkrane im Gebäude**



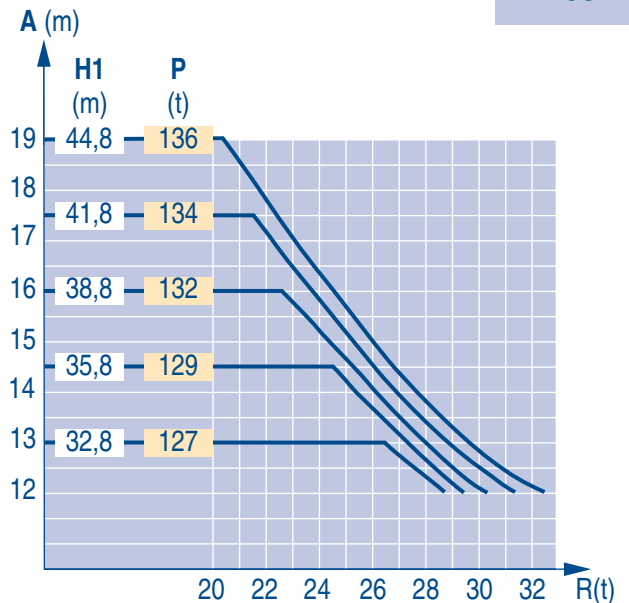
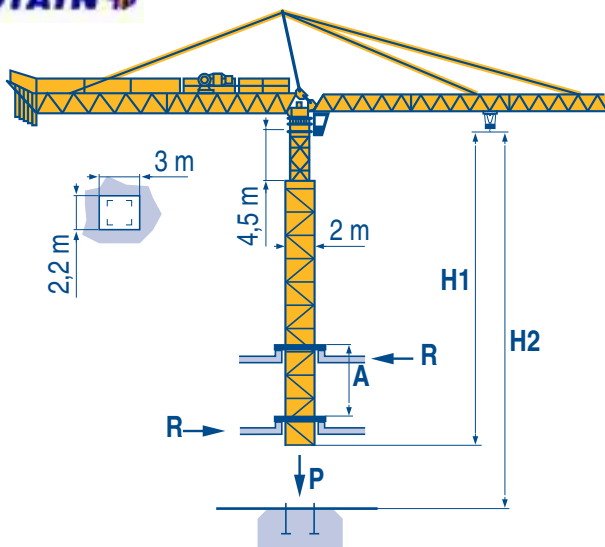
**Climbing crane**  
**Telescopage gruas trepadoras**



**Gru in cavedio**  
**Telescopagem sobre lages**



BA 68 A



H2	55 RCS		70 RCS 30		120 LMD 30S	
	🏗️	🏗️	🏗️	🏗️	🏗️	🏗️
	183 m	92 m	282 m	141 m	300 m	150 m

LMX1

<b>A</b>	Distance entre cadres	<b>F</b>	Abstand zwischen den Rahmen	<b>D</b>	Distance between collars	<b>GB</b>	Distancia entre marcos	<b>E</b>	Distanza fra i telai	<b>I</b>	Distância entre quadros	<b>P</b>
<b>H1</b>	Hauteur grue		Kranhöhe		Crane height		Altura grúa		Altezza gru		Altura da grua	
<b>P</b>	Poids de la grue (en service)		Krangewicht (in Betrieb)		Crane weight (in service)		Peso de la grúa (en servicio)		Peso della grua (in servizio)		Peso da grua (em serviço)	
<b>R</b>	Réaction horizontale		Horizontalkräfte		Horizontal reaction		Reaccion horizontal		Reazione orizzontale		Reacção horizontal	



												ch - PS hp	kW		
▲ ▼	55 RCS 30	m/min	0 → 34	0 → 68	-			0 → 17	0 → 34	-			55	40,5	365 m >365
		t	6	3	-			12	6	-					
	70 RCS 30	m/min	0 → 40	0 → 80	-			0 → 20	0 → 40	-			70	51	565 m >565
		t	6	3	-			12	6	-					
	150 LCC 30	m/min	86 → 103 → 129 → 172 → 206					43 → 52 → 65 → 86 → 103					150	110	652 m >652
		t	6	4,5	3	1,5	0,75	12	9	6	3	1,5			
◀ ▶	15 DRC 8	m/min	0 - 4 → 43 - 86									14	10,3		
	RTV	tr/min U/min rpm	0 → 0,7									2 x 12	2 x 9		
 R 20 m	XA RT 664 A2B - 2V	m/min	16 - 32									6 x 7	6 x 5,2		
 R 32 m	YA RT 664 A2B - 2V	m/min	16 - 32									6 x 7	6 x 5,2		

CEI 38	IEC 38	kVA	
400 V (+6% -10%) 50 Hz		55 RCS 30 : 90 kVA 70 RCS 30 : 110 kVA 150 LCC 30 : 190 kVA	84/534 - 87/405

LMX 3

	Levage	F	Heben	D	Hoisting	GB	Elevación	E	Sollevamento	I	Elevação	P
	Distribution		Katzfahren		Trolleying		Distribución		Distribuzione		Distribuição	
	Orientation		Schwenken		Slewing		Orientación		Rotazione		Rotação	
	Translation		Kranfahren		Travelling		Traslación		Traslazione		Translação	
	Conforme aux directives CEE 84/534 et 87/405 sur le niveau acoustique		Gemäss EWG-Richtlinien 84/534 und 87/405 für den Schall-Leistungspegel		In compliance with the EEC 84/534 and 87/405 Instructions on noise level		Conforme as directivas CEE 84/534 y 87/405 sobre el nivel acústico		Conforme alle direttive CEE 84/534 e 87/405 sul livello acustico		Conforme as directivas CEE 84/534 e 87/405 sobre o nível acústico	
	Nous consulter		Auf Anfrage		Consult us		Consultarnos		Consultateci		Consultar-nos	

Document commercial non contractuel. Pour toute information technique se référer à la notice correspondante

Unverbindliches Vertriebsdokument. Für technische Informationen, siehe die entsprechenden Anweisungen.

This commercial document is not legally binding. For any technical information, please refer to the corresponding instructions.

Documento comercial non contractuel. Para cualquier información técnica, ver la noticia correspondiente.

Documento commerciale non vincolante, per tutte le informazioni tecniche fare riferimento al catalogo istruzioni

Documento comercial não contratual. Para qualquer informação técnica complementar consultar as respectivas instruções



**POTAIN**

18.Rue de Charbonnières, B.P. 173  
F-69132 ECULLY Cedex  
Tél. (33)04.72.18.20.20  
Fax (33)04.72.18.20.00  
http://www.potain.com  
E-mail : mkt@potain.fr



Manitowoc Crane Group

**Deutschland**  
POTAIN GmbH Tel : 06.1.05.70.40  
**Italia**  
POTAIN S.p.A. Tel : 0.331.49.33.11  
**Portugal**  
POTAIN Portugal Tel : 22.968.08.89  
**Singapore**  
MANITOWOC POTAIN PTE LTD Tel : 227.15.50

Copyright.Reproduction interdite © POTAIN 2000

**TOPKIT K3/59 C**  
Réf. 1997.44 LMX 8